

DEGREES OF PROTECTION PROVIDED BY ENCLOSURES PATTERN TEST REPORT

Test Standard : IEC/EN 60529(2001-2002)

Date of Receipt : 2013 / 09 / 02

Test Date : 2013 / 09 / 02 ~ 2013 / 09 / 03

Result of determination this subclass type experiment : **PASS(IP67)**

1. Issue date for test report : 2013 / 09 / 04
2. Report No : 13090201
3. Total pages : 8
4. Test report without steel stamp is not valid, and shall not be reproduced except in full.
5. Test sample is not sampling by laboratory, test result relate only to the items tested.
6. Test report is not responsible for advertisement or promotion for products.

Approved Signatory:



Test Report

Information for test items

Applicant : GlacialTech Inc

Applicant's address : 9Fl., No. 352, Sec. 2, Jung Shan Rd., Jung He City, Taipei,
Taiwan, 235, R.O.C

Manufacturer : GlacialTech Inc

Manufacturer's address : 9Fl., No. 352, Sec. 2, Jung Shan Rd., Jung He City,
Taipei, Taiwan, 235, R.O.C

Product : LED Driver

Master model : GP-LS100PH-142Cxyy

Series model : GP-LS50PH-142Cxyy 、 GP-LS70PH-100Cxyy 、
GP-LS100PH-71Cxyy 、 GP-LS100PH-142C1xyy 、
GP-LS100PH-140xyy (x=A or blank ; yy= any character or
number or blank)

Logo :  or **BR**

Uses the place : in door out door

Outward appearance size : L 177 mm 、 W 55 mm 、 H 35 mm

Test Standard : IEC/EN 60529 IEC/EN 60598-1

Application test rank : IP67

Test content

Standard chapter	Test standard (IEC/EN 60529)	Result of test	Determination
	Temperature : 25.4 °C Humidity : 59.2 %RH		
13	Degrees of protection against solid foreign objects indicated by the first characteristic numeral		
First characteristic numeral			
13.6	If not whether the lights marked the second type (dust-free vacuum chamber within the state), be regarded as the first type (dust chamber internal pressure to have negative pressure)Ingress of dust is not totally prevented, but dust shall not penetrate in a quantity to interfere with satisfactory operation of the apparatus or to impair safety (with underpressure is 2kPa) the duration of the test is 8 hour.	No dust into the enclosure	PASS
14	Degrees of protection against water indicated by the second characteristic numeral		
Second characteristic numeral			
14.2.7	The test is made by completely immersing the enclosure in water in its service position as specified by the manufacturer so that the following conditions are satisfied 1) the lowest point of enclosures with a height less then 850mm is located 1m below the surface of the water. 2) the duration of the test is 30 min.	No water into the enclosure	PASS

Photo of test items

Before the test



Before the test



Photo of test items

IP6X testing

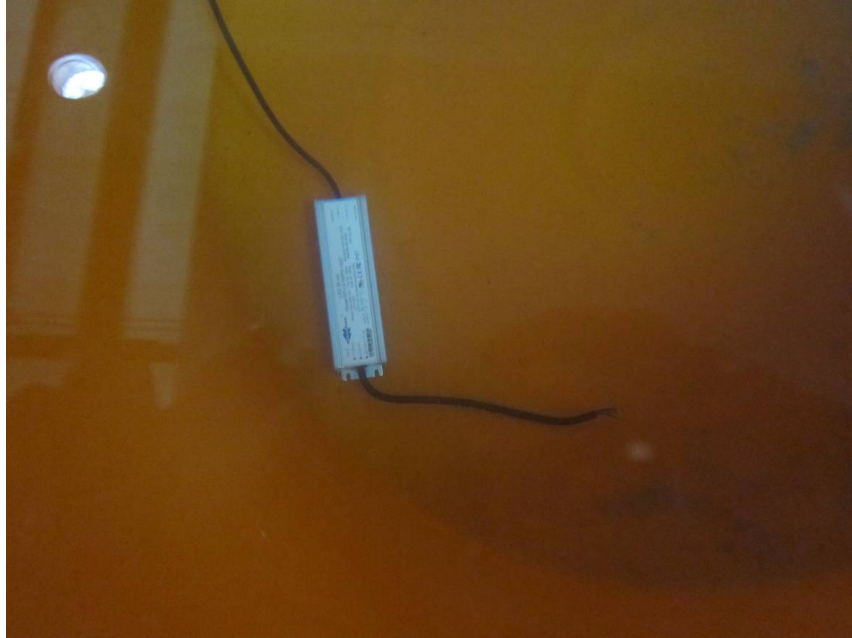


IP6X after the test

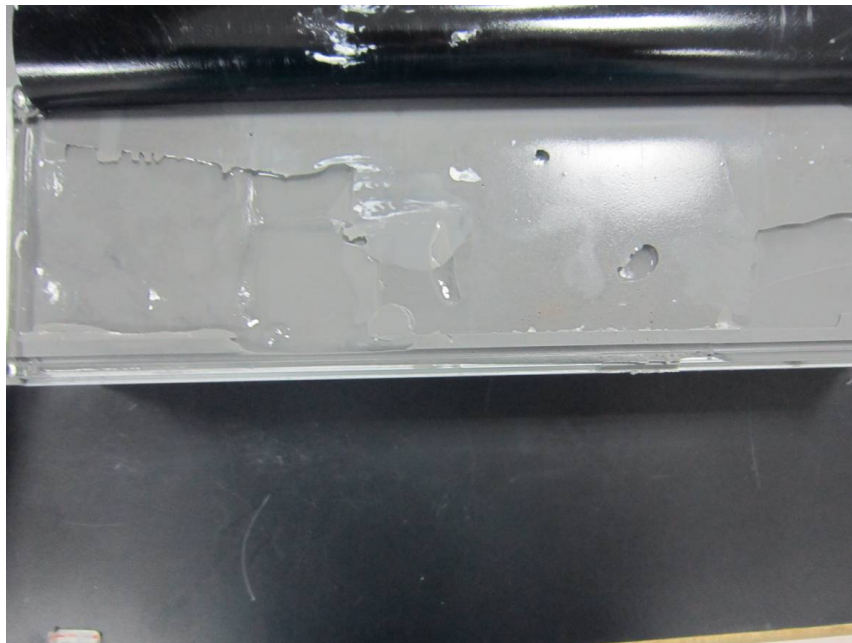


Photo of test items

IPX7 testing



IPX7 after the test



Equipment list and testing engineer for test

Item	Equipment No	Equipment	Manufacturer / Type / Series No
1	99S-04	Bears the dust testing machine class dust + Floating dust	TAICHY TECHNOLOGY LTD DT-1500CF
2	99S-20	Bears the rain water testing machine	TAICHY TECHNOLOGY LTD RT-IEC-IPX7.8
			Testing engineers : Chun-Ting Liu

-Following blank-

Differential analysis explain

Entrust bodies	GlacialTech Inc
Master model	GP-LS100PH-142Cxyy
Series model	GP-LS50PH-142Cxyy 、 GP-LS70PH-100Cxyy 、 GP-LS100PH-71Cxyy 、 GP-LS100PH-142C1xyy 、 GP-LS100PH-140xyy

Luminaires of the difference contents
<p>Series model GP-LS50PH-142Cxyy 、 GP-LS70PH-100Cxyy 、 GP-LS100PH-71Cxyy 、 GP-LS100PH-142C1xyy 、 GP-LS100PH-140xyy and master model GP-LS100PH-142Cxyy besides output voltage and wattage are different, the test items external structure are all the same, therefore does not have the influence dustproof waterproofing rank.</p> <p>Additional Model wattage and output voltage follows :</p> <p>GP-LS100PH-142Cxyy : wattage 100W ; output voltage 142V</p> <p>GP-LS50PH-142Cxyy : wattage 50W ; output voltage 142V</p> <p>GP-LS70PH-100Cxyy : wattage 70W ; output voltage 100V</p> <p>GP-LS100PH-71Cxyy : wattage 100W ; output voltage 71V</p> <p>GP-LS100PH-142C1xyy : wattage 100W ; output voltage 142V</p> <p>GP-LS100PH-140xyy : wattage 100W ; output voltage 140V</p>