

**APPLICATION FOR TEST REPORT  
On Behalf of**

**GlacialTech Inc**

**LED Driver**

**Model No. : GP-LE150N-yyVzzz**

**Prepared for : GlacialTech Inc  
6Fl.,No.346 Sec 2 Jung Shan Road ,Jung He Dist.,  
NewTaipei City 235, Taiwan(R.O.C)**

**Manufacturer : GlacialTech Inc  
6Fl.,No.346 Sec 2 Jung Shan Road ,Jung He Dist.,  
NewTaipei City 235, Taiwan(R.O.C)**

**Prepared By : Guangdong Keyway Testing Technology Co., Ltd.  
Building 1, Baishun Industrial Zone, Zhangmutou,  
Dongguan, Guangdong, China**


**Tel:+86-769-87182258  
Fax:+86-769-87181058**

**Report Number : TR18120290-S-000**

**Date of Test : Dec. 22, 2018 to Dec. 28, 2018**

**Date of Report : Jan. 09, 2019**

**TEST REPORT**  
**IEC 60529**  
**Degrees of protection provided by enclosures (IP Code)**

Report reference No. .... :	TR18120290-S-000
Tested by (+ signature) .....	Jason Dong <i>Jason Dong</i>
Reviewed by (+ signature) .....	Faker Guo <i>Faker Guo</i>
Approved by (+ signature).....	Toney Cao <i>Toney Cao</i>
Date of issue .....	Jan.09, 2019
Total page .....	8
Testing laboratory .....	Guangdong Keyway Testing Technology Co., Ltd.
Location .....	Building 1, Baishun Industrial Zone, Zhangmutou, Dongguan, Guangdong, China
Applicant.....	GlacialTech Inc
Address .....	6Fl.,No.346 Sec 2 Jung Shan Road .,Jung He Dist., NewTaipei City 235, Taiwan(R.O.C)
Manufacturer .....	GlacialTech Inc
Address .....	6Fl.,No.346 Sec 2 Jung Shan Road .,Jung He Dist., NewTaipei City 235, Taiwan(R.O.C)
Standards .....	IEC 60529:1989+A1:1999+A2:2013
Procedure deviation .....	N/A
Non-standard test meth.....	N/A
Test item description .....	LED Driver
Trademark .....	
Model and/or type reference .....	GP-LE150N-yyVzzz ("zzz" can be any character, number or blank; V:Constant Voltage; "yy" represents the max.output voltage which may be any number from 12 to 24)
Rating(s).....	I/P: see model list for detail. O/P: see model list for detail.
Test items particulars:	IP67
Test case verdicts	--
Test case does not apply to the test object .....	N/A
Test item does meet the requirement .... :	P(ass)
Test item does not meet the requirement:	F(ail)
Testing	--



Date of receipt of test item .....: Dec. 22, 2018

Date(s) of performance of test .....: Dec. 22, 2018 to Dec. 28, 2018

**General remarks**  
 This report shall not be reproduced except in full without the written approval of the testing laboratory.  
 The test results presented in this report relate only to the item(s) tested.  
 " (see remark #)" refers to a remark appended to the report.  
 "(See Annex #)" refers to an annex appended to the report.

**Summary of testing:**  
 The product passed the IP67 test.

Model list:

Model No.	Rated Input	Rated Output Voltage	Rated Output Current	Rated Output Power(Max.)	Transformer	ta/tc
LE150N-yyVzzz	220-240V~, 50/60Hz	12Vdc	0-10.0A	120W	POT402002	50/90
		24Vdc	0-6.25A	150W	POT402001	

"GP-LE150N-yyVzzz":  
 "zzz" can be any character,number or blank,  
 "V": Constant Voltage;  
 "yy" represents the max.output voltage which may be any number from 12 to 24;

The models have the same layout and construction, except that specifications of secondary components are different.  
 The model **GP-LE150N-24V** were chosen as representative models to perform IP67 tests.

**Name and address of factory(ies):**  
 Name: GlacialTech Inc  
 Address: 6Fl.,No.346 Sec 2 Jung Shan Road .,Jung He Dist., NewTaipei City 235, Taiwan(R.O.C)

IEC 60529			
Clause	Requirement + Test	Result - Remark	Verdict

IEC 60529 Degrees of protection provided by enclosures (IP Code)			
Clause	Requirement	Result	Verdict
4	Designations	IP67	P
5	Degrees of protection against access to hazardous parts and against solid foreign objects indicated by the first characteristic numeral		P
5.1	Protection against access to hazardous parts		P
5.2	Protection against solid foreign objects		P
6	Degrees of protection against ingress of water indicated by the second characteristic numeral		P
7	Degrees of protection against access to hazardous parts indicated by the additional letter		N/A
8	Supplementary letters		N/A
10	Marking		P
11	General requirements for tests		P
11.1	Atmospheric conditions for water or dust tests	Temperature range: 15°C to 30°C Relative humidity: 25% to 75% Air pressure: 86kPa to 106kPa	P
11.2	Test samples	Clean and new condition, practicable to test the complete equipment	P
11.3	Application of test requirements and interpretation of test results	Apply this standard	P
11.4	Combination of test conditions for the first characteristic numeral		P
11.5	Empty enclosures	Not applicable	N/A
12	Tests for protection against access to hazardous parts indicated by the first characteristic numeral	No openings	N/A
12.1	Access probes		N/A
12.2	Test conditions		N/A
12.3	Acceptance conditions		N/A
12.3.1	For low-voltage equipment		N/A
13	Tests for protection against solid foreign objects indicated by the first characteristic numeral		P

IEC 60529			
Clause	Requirement + Test	Result - Remark	Verdict
13.1	Test means		P
13.2	Test conditions for first characteristic numerals 1,2,3,4		N/A
13.3	Acceptance conditions for first characteristic numerals 1,2,3,4		N/A
13.4	Dust test for first characteristic numerals 5 and 6		P
13.5	Special conditions for first characteristic numeral 5		N/A
13.6	Special conditions for first characteristic numeral 6		N/A
14	Tests for protection against water indicated by the second characteristic numeral		<b>P</b>
14.1	Test means		P
14.2	Test conditions		P
14.2.1	Test for second characteristic numeral 1 with the drip box		N/A
14.2.2	Test for second characteristic numeral 2 with the drip box		N/A
14.2.3	Test for second characteristic numeral 3 with oscillating tube or spray nozzle		N/A
14.2.4	Test for second characteristic numeral 4 with oscillating tube or spray nozzle		N/A
14.2.5	Test for second characteristic numeral 5 with the 6.3mm nozzle		N/A
14.2.6	Test for second characteristic numeral 6 with the 12.5mm nozzle		N/A
14.2.7	Test for second characteristic number 7: temporary immersion between 0.15m and 1m	No water into	P
14.2.8	Test for second characteristic number 8: continuous immersion subject to agreement		N/A
14.3	Acceptance conditions	The test conditions are more severe than those prescribed on 14.2.5 and take account of the condition that the enclosure will be continuously immersed in actual use.	N/A
15	Test for protection against access to hazardous parts indicated by the additional letter	No additional letter	<b>N/A</b>

IEC 60529			
Clause	Requirement + Test	Result - Remark	Verdict

Test Equipment:							
Lab No.	Equipment Name	Model	Manufacturer	Factory number	Technical parameters	Precision	Calibration Certificate No
KWL-078	Water proof test device	HY-IPX1-1-7	HaiYu	Q2009-056	IPX1~7	(k=2)	ZJ201705151456
KWL-079	Dustproof test device	GK-SC1800	GBTE	20090102313	φ 12MM	1m <sup>&gt;3</sup>	ZJ201705153767

# Photos



Figure .1-Front overview for model GP-LE150N-24V

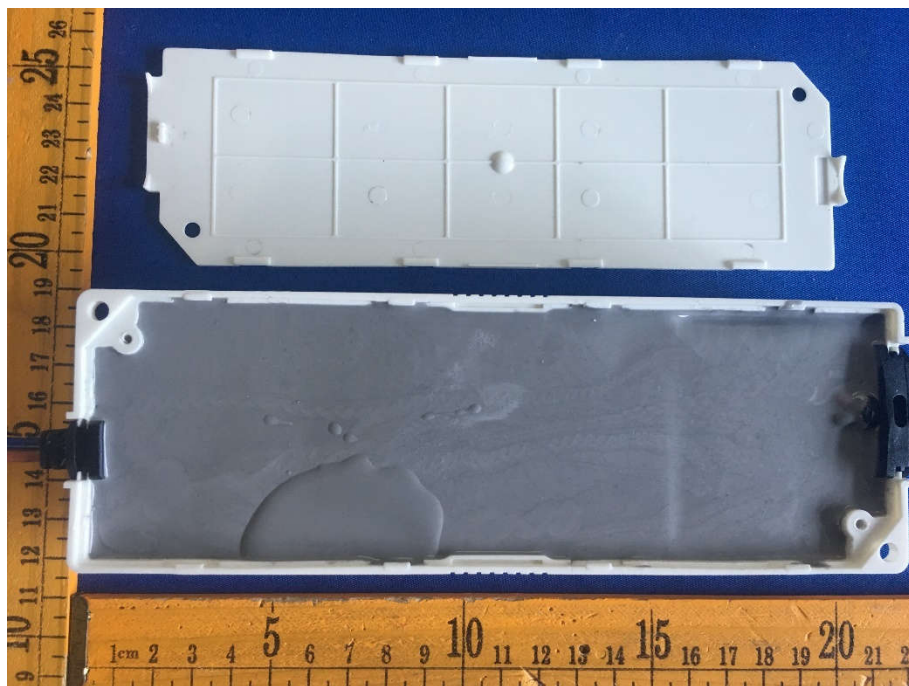


Figure .2-Internal view

## Photos



Figure .3- IP6X testing



Figure .4- IPX7 testing

\*\*\*\*\*End of this report\*\*\*\*\*